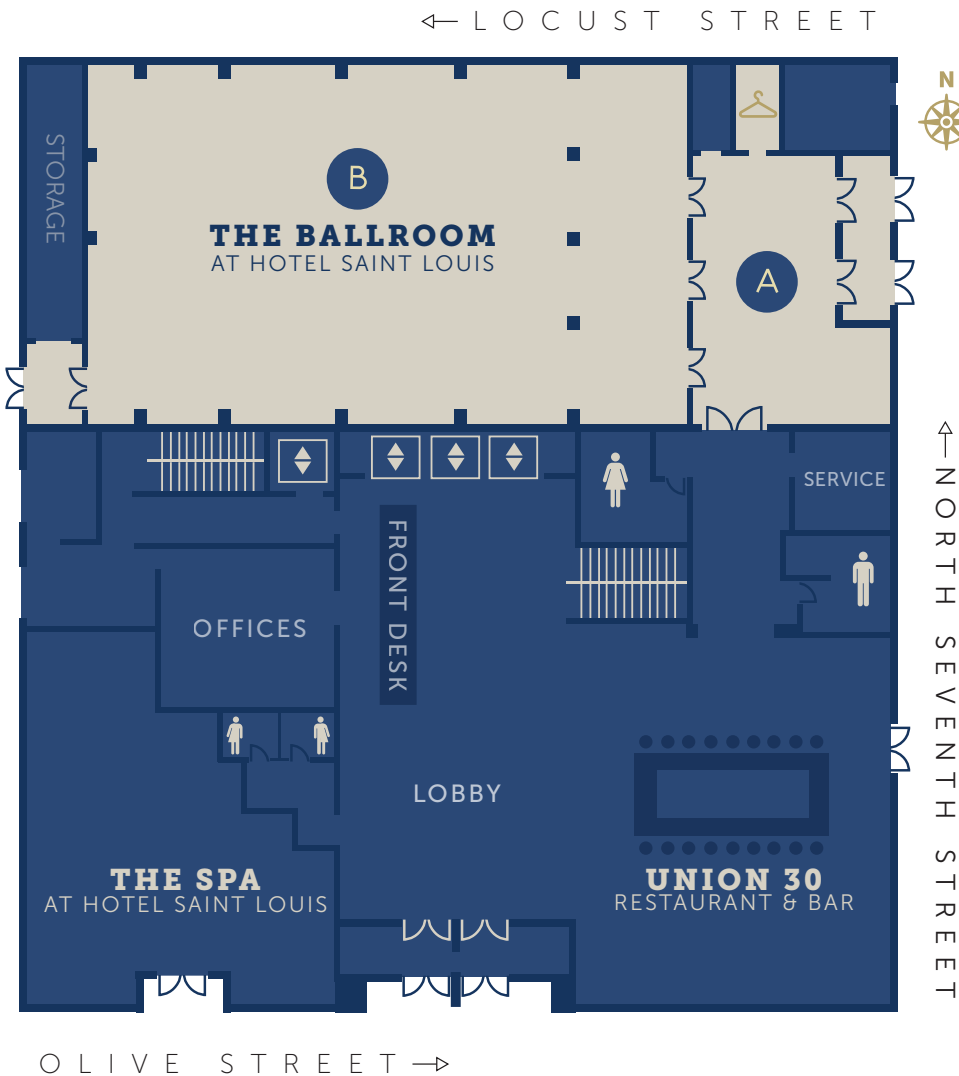


# EVENT CAPACITIES **FIRST FLOOR**

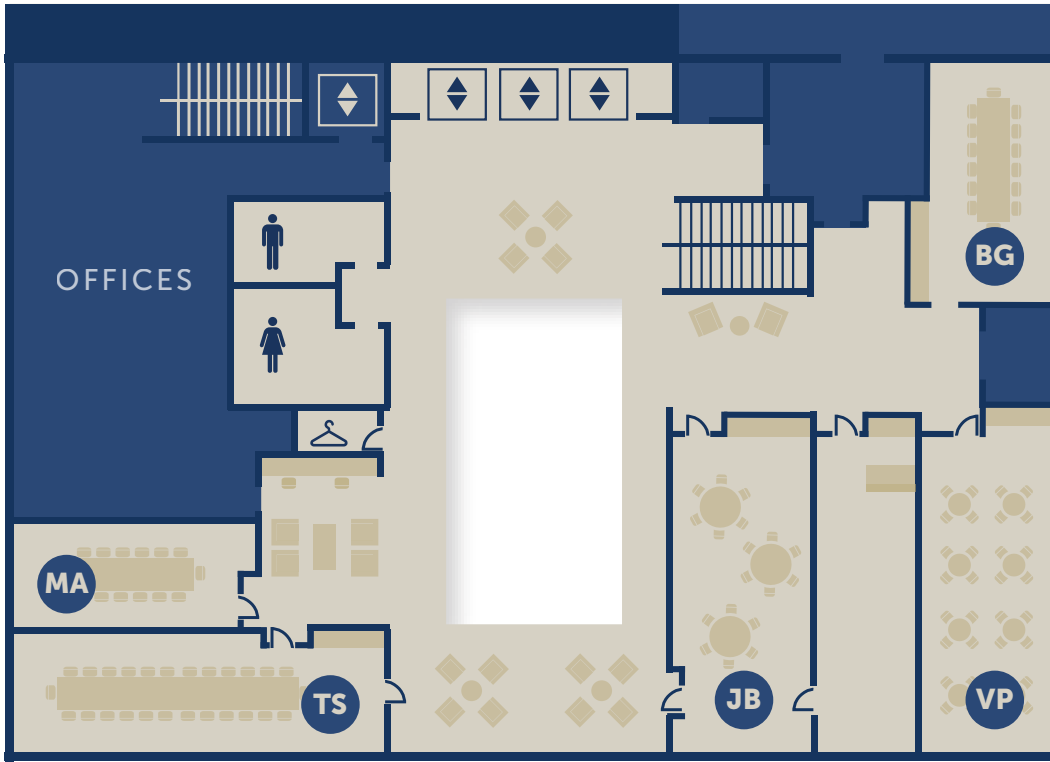


705 OLIVE STREET • SAINT LOUIS • MO • 63101 • 314.241.4300 • [HOTELSAINTLOUIS.COM](http://HOTELSAINTLOUIS.COM)

- A** PRE-FUNCTION : 38' x 21' : 15' Ceiling : 894 sq.ft.
- B** BALLROOM : 87' x 51' : 15' Ceiling : 4424 sq.ft.

Banquet: 320	Reception: 350
Half Moon: 120	U-Shape: 75
Classroom: 252	Hollow H-Square: 90
Theater: 560	

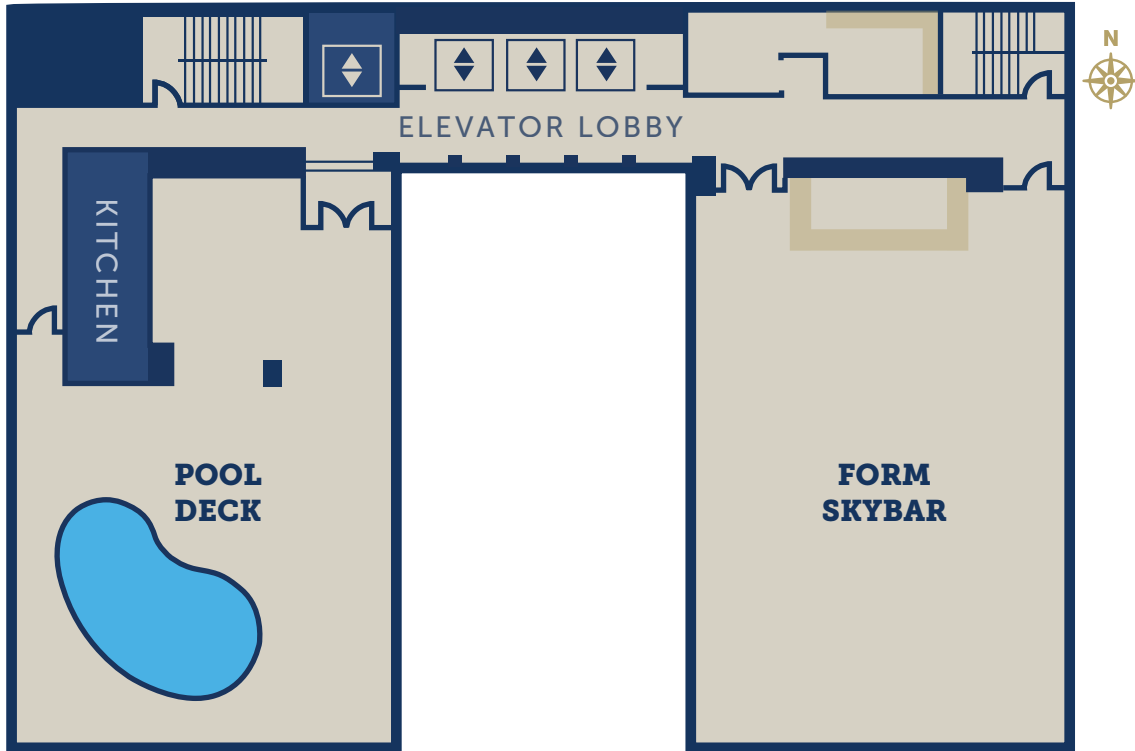
# EVENT CAPACITIES SECOND FLOOR



↑ All Ceiling Heights: 12'








		Classroom	Theatre	Conference	U-Shape	Reception	Crescent Rounds	Rounds
Betty Grable <b>BG</b>	27' 9" x 14' 389 ft <sup>2</sup>	0	0	16	0	0	0	0
Vincent Price <b>VP</b>	37' 9" x 15' 8" 591 ft <sup>2</sup>	20-30	48	24	20	25	20-24	32-40
Josephine Baker <b>JB</b>	37' 9" x 16' 10" 635 ft <sup>2</sup>	20-30	48	24	20	30	20-24	32-40
T.S. Eliot <b>TS</b>	43' 10" x 14' 6" 650 ft <sup>2</sup>	24	56	24	24	30	20-24	32-40
Maya Angelou <b>MA</b>	26' x 12' 4" 320 ft <sup>2</sup>	0	0	12	0	0	0	0

# EVENT CAPACITIES SIXTEENTH FLOOR



FORM Skybar

38' x 50' 4"  
2071 ft<sup>2</sup>

Classroom	Theatre	Conference	U-Shape	Reception	Crescent Rounds	Rounds*
						
50	200	40	35	200	84	140*

\* With buffet in elevator lobby